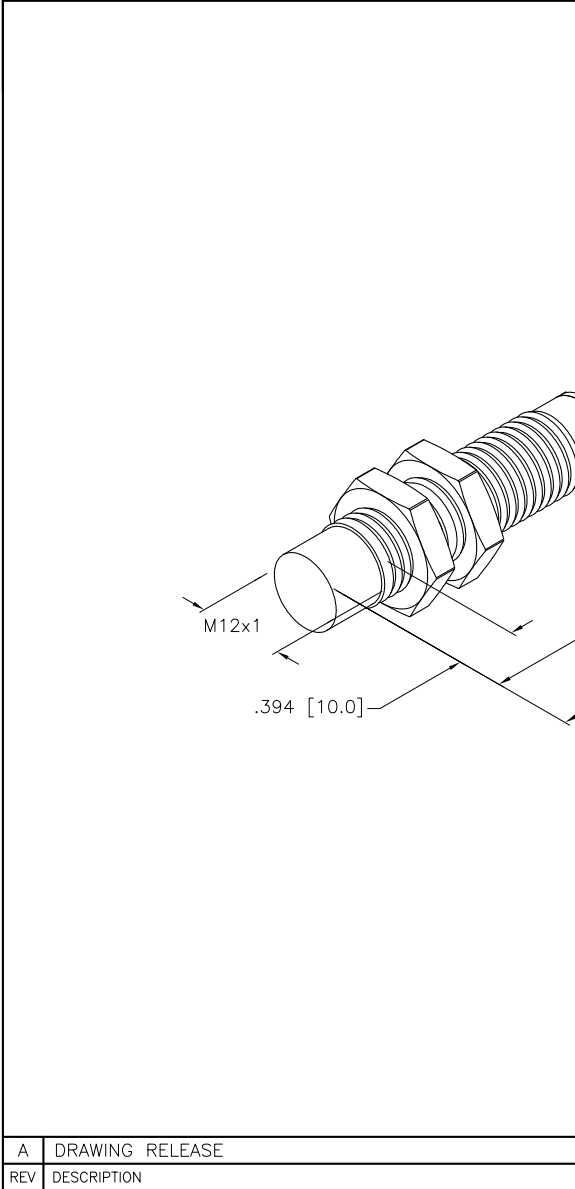


### WIRING DIAGRAM

The diagram shows a 3-phase 4-wire system. On the left, a diamond-shaped symbol represents a 3-phase source. Three lines extend from it to a switch mechanism. The switch has three terminals labeled BN, BU, and BK. BN is connected to a line labeled '+'. BU is connected to a line labeled '-'. BK is connected to a line that passes through a rectangular box labeled 'LOAD' before reaching the '-' terminal. Below the switch, the text 'OUTPUT: AP6X' is written.

OUTPUT: AP6X

SHORT-CIRCUIT AND OVERLOAD PROTECTED



LOCKNUT LN-M12

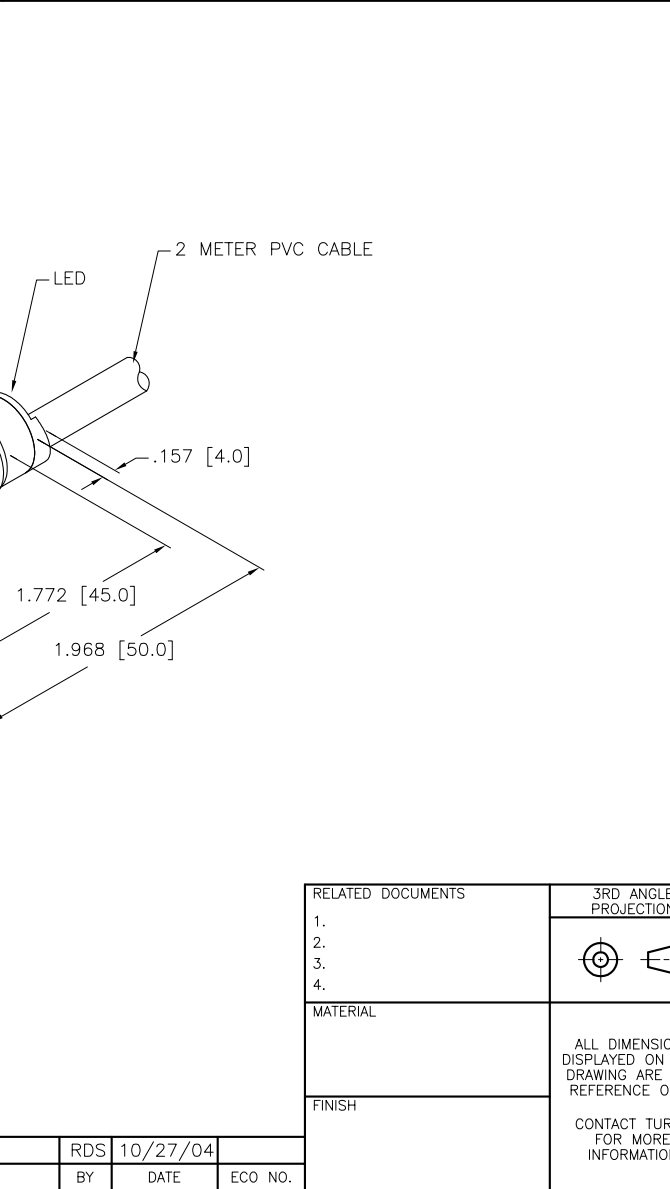
M12x1

Front View Dimensions:

- Outer Hexagon Side: .768 (19.5)
- Inner Circle Diameter: .669 (17.0)

Side View Dimensions:

- Height: .157 (4.0)



SPECIFICATIONS	
RATED OPERATING DISTANCE	8mm [.315]
MOUNTING MODE	NON-FLUSH, PARTIALLY FLUSH MOUNTABLE
TEMPERATURE DRIFT	≤±10% ≤±15%, ≤ -25°C v ≥ +70°C
HYSTERESIS	3-15%
MIN. REPEAT ACCURACY	≤ 2%
OPERATING TEMPERATURE	-30°C to +85°C (-22°F to +185°F)
RATED OPERATIONAL VOLTAGE	10-30 VDC
MAX. RIPPLE	≤ 10%
DC RATED OPERATIONAL CURRENT	≤ 200 mA
NO-LOAD CURRENT	≤ 15 mA
RESIDUAL CURRENT	≤ 0.1 mA
RATED INSULATION VOLTAGE	≤ 0.5 kV
SHORT-CIRCUIT PROTECTION	YES
MAX. VOLTAGE DROP	≤ 1.8 V
WIRE BREAKAGE PROTECTION	INCORPORATED
REVERSE POLARITY PROTECTION	INCORPORATED
OUTPUT FUNCTION	3-WIRE, NORMALLY OPEN, PNP
MAX. SWITCHING FREQUENCY	≤ 2 kHz
HOUSING MATERIAL	BRASS, CHROME PLATED
ACTIVE FACE MATERIAL	PLASTIC, PBT
END CAP MATERIAL	PLASTIC, EPTR
CABLE	ø5.2, LifYY, PVC, 2 METER LENGTH
VIBRATION RESISTANCE	55 Hz (IN ALL 3 PLANES)
SHOCK RESISTANCE	30 g, 11 ms
DEGREE OF PROTECTION	IP 67
SWITCHING STATUS INDICATION	LED, YELLOW

<div>THIS DRAWING IS PROPERTY OF TURCK INC. USE OF THIS DOCUMENT WITHOUT WRITTEN PERMISSION IS PROHIBITED.</div>	<div><div>TURCK INC</div><div>High Technology Sensors and Automation Controls</div></div>		<div>3000 CAMPUS DRIVE MINNEAPOLIS, MN 55441 1-800-544-7769 (763) 553-7300 (763) 553-0708 fax turck.com</div>	
	<div>DRFT RDS</div>	<div>DATE 10/27/04</div>	<div>DESCRIPTION  NI 8U-M12-AP6X</div>	
<div>DSGN RT</div>	<div>SCALE 1=1.0</div>			
<div>UNIT OF MEASUREMENT  INCH [ MILLIMETER ]</div>		<div>IDENTIFICATION NO.  M1644100</div>		<div>REV  A</div>
<div>DO NOT SCALE THIS DRAWING</div>		<div>FILE: M1644100</div>		<div>SHEET 1 OF 1</div>